



**Beeches Cottage High Street  
Uxbridge, UB8 2AW  
£2,628 PCM**

**Deposit required £3,032**

**Available date 6th August  
2026**

**\*\*STUDENTS\*\***

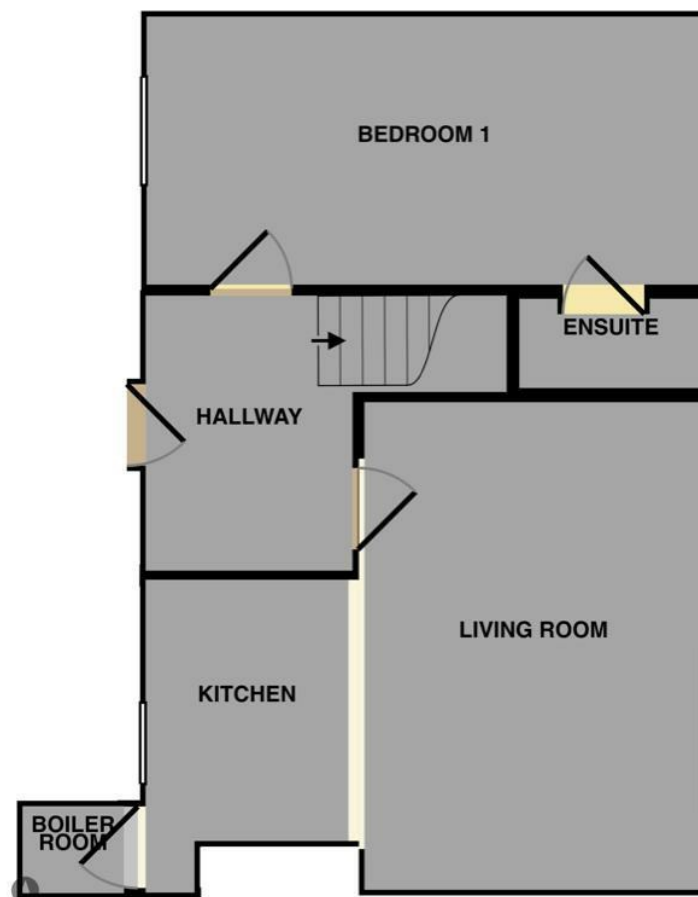
**4 BEDROOMS - AVAILABLE 06/08/2026**

The rental payments equate to approx £657 per person per month or £152 per person per week excluding bills. UniHomes offer a bills package for £26 per person per week. (Incl Gas, Electric, Water, TV licence and internet) which can be organised through Nupad initially.

**COUNCIL TAX BAND D  
EPC D**

Nupad offer this excellent FOUR-bedroom house comprising of FOUR FURNISHED BEDROOMS, a LOUNGE open planed to KITCHEN, main BATHROOM upstairs, 2 bedrooms have en suite shower rooms, outside there are communal gardens and parking for 1 car.

The property is ideal for students at Brunel University as it's walking distance to the university. It is also nearby to direct bus routes to Uxbridge Town Centre, Heathrow, Stockley Park and the local underground station, which provides further access to Central London.7



Energy Efficiency Rating		
	Current	Potential
Very energy efficient - lower running costs		
(92 plus) <b>A</b>		
(81-91) <b>B</b>		
(69-80) <b>C</b>		
(55-68) <b>D</b>		
(39-54) <b>E</b>		
(21-38) <b>F</b>		
(1-20) <b>G</b>		
Not energy efficient - higher running costs		
<b>England &amp; Wales</b>		<b>85</b>
EU Directive 2002/91/EC		

Environmental Impact (CO <sub>2</sub> ) Rating		
	Current	Potential
Very environmentally friendly - lower CO <sub>2</sub> emissions		
(92 plus) <b>A</b>		
(81-91) <b>B</b>		
(69-80) <b>C</b>		
(55-68) <b>D</b>		
(39-54) <b>E</b>		
(21-38) <b>F</b>		
(1-20) <b>G</b>		
Not environmentally friendly - higher CO <sub>2</sub> emissions		
<b>England &amp; Wales</b>	<b>49</b>	<b>49</b>
EU Directive 2002/91/EC		